



# Health Professions Programs

**Educational Opportunities**



Caregiver education is an integral part of the Cleveland Clinic heritage. The hospital's founders, Drs. Frank E. Bunts, George W. Crile, William E. Lower and John Phillips, established Cleveland Clinic as a group practice in 1921 with the mission of “providing better care for the sick, investigation into their problems, and further education of those who serve.” Patient care, research and education remain the pillars of the organization's mission today, as symbolized in the current logo of four squares representing patient care (clinical and hospital), research and education.

To carry out the organizational mission, Cleveland Clinic strives to excel not only in specialized medical care, but also in comprehensive research and education. Our programs train future caregivers in the provision of a wide array of diagnostic, therapeutic and preventive health interventions, including both direct and indirect patient-care roles. Students of these programs benefit from a dynamic environment, learning and working alongside world-class healthcare professionals. In addition to didactic preparation, Cleveland Clinic training programs provide the resources for students to complete fieldwork experiences as required by their professions.

The Center for Health Professions Education and Cleveland Clinic are committed to valuing all people throughout our organization, regardless of background or culture. A diverse and inclusive environment for students and culturally appropriate care for our patients are essential to fulfilling our vision to be the best place for care anywhere and the best place to work in healthcare. We welcome students from diverse backgrounds and cultures. If you are considering a career in the health professions and want to learn in a world-class healthcare setting alongside top professionals, I urge you to consider one of the many Cleveland Clinic internal education programs described in this brochure.

As you study the career options and have specific questions, please feel free to contact the program directors whose contact information is listed. Thank you for taking the time to consider the educational opportunities at Cleveland Clinic.

**Mari Knettle, DPT, EdD**

*Medical Director, Center for Health Professions Education  
Cleveland Clinic*

# Health Professions Programs

Accredited Sleep Technologist Education Program (ASTEP) .....	4	Dietetic Internship.....	19
*Cardiac Ultrasound .....	5	EMT & Paramedic Education .....	21
*Cardiovascular Perfusion .....	7	Medical Dosimetry .....	23
Clinical Pastoral Education .....	8	Medical Laboratory Science.....	24
Cytology.....	9	Medical Scribe Training	
Diagnostic Imaging (Beachwood)		Advanced Transcription, Observation, Medical Instruction (ATOMIC) .....	26
*Diagnostic Medical Sonography .....	11	Medical Observation and Scribe Training (MOST) .....	27
*Post Primary Computed Tomography (CT).....	12	International Medical Graduate Mentorship Program and Advanced Clinical Transcription (IMPACT) .....	28
*Post Primary Magnetic Resonance Imaging (MRI) .....	13	Nurse Anesthesia .....	29
Primary Magnetic Resonance Imaging (MRI) .....	14	*Pharmacy Technology .....	30
*Radiologic Technology .....	15	Phlebotomy.....	31
Diagnostic Imaging (Mercy Hospital)		WOC Nursing Education Program.....	32
Diagnostic Medical Sonography .....	17		
Radiologic Technology.....	18		

The Center for Health Professions Education appreciates your interest in Cleveland Clinic's internal health professions programs. This brochure provides a brief explanation of each program and names of individuals to contact for more information.

The preadmission requirements and application process are unique for each program. For example, some programs may require students to have a high school diploma or GED and a few college courses, while others may require students to have a baccalaureate degree. Also, the instructional length of programs varies from several weeks or months to one or two years. Cleveland Clinic is not a degree-granting institution; therefore, students may not qualify for financial aid. (NOTE: The School of Diagnostic Imaging's Radiology Technology program is an exception. Their students are eligible to apply for federal financial aid.)

If you are interested in a specific health professions discipline and would like more information, you are encouraged to contact the program director.

Visit Cleveland Clinic's Center for Health Professions Education website:

[www.clevelandclinic.org/chpe](http://www.clevelandclinic.org/chpe)

The Ohio State Board of Career Colleges and Schools (OSBCCS) monitors post-secondary education programs to ensure compliance with minimum standards set by Ohio Revised Code Chapter 3332. In addition to complying with Cleveland Clinic educational policies, programs that fall under ORC 3332 (School Registration No.2165) must also ensure compliance with all requirements of the OSBCCS.

If you have questions, please contact:

**Center for Health Professions Education**  
 9500 Euclid Ave., JJ21  
 Cleveland, OH 44195  
 216.444.5678 option 4

*\*This program is approved by the Ohio State Board of Career Colleges and Schools.*

# Accredited Sleep Technologist Education Program (ASTEP)



A polysomnographic technologist works with individuals who have suspected or diagnosed sleep disorders. They perform sleep studies, including preparing a patient for the study and monitoring the diagnostic equipment during the test.

## Program Details

The Accredited Sleep Technologist Education Program (ASTEP) is accredited through the American Academy of Sleep Medicine (AASM) to provide standardized education for sleep trainees. Cleveland Clinic is pleased to offer the ASTEP I program that incorporates two weeks of lecture/classroom time along with hands-on and return demonstration of sleep skills. This blended course is a lead-in to prepare students for ASTEP II, which is offered independently of this program ([aasmnet.org/astep/Modules.aspx](https://aasmnet.org/astep/Modules.aspx)). Upon completion of the ASTEP I, ASTEP II and required clinical hours, students may qualify to apply for the Board of Registered Polysomnography Technologists (BRPT) examination.

## Preadmission Requirements

Minimum of high school education and current basic life support certification

## Length of Program

Two weeks

## For additional information, please contact:

### Judy Petriella, RPST, RRT

ASTEP Instructor & Technical Director  
Cleveland Clinic Sleep Disorders Center  
4200 Warrensville Center Road, Suite 420  
Cleveland, OH 44195

**216.379.9548** | [astep@ccf.org](mailto:astep@ccf.org)  
[clevelandclinic.org/astep](https://clevelandclinic.org/astep)

# Cardiac Ultrasound

Cardiac sonographers use sophisticated diagnostic ultrasound equipment to produce dynamic real-time imaging of the heart's chambers, walls, valves and great vessels to assist the physician in diagnosing cardiovascular disease. Cardiac sonographers complete important tasks, such as:

- › Acquiring information related to the heart's anatomy and physiology.
- › Evaluating acquired and congenital cardiac abnormalities and associated complications.
- › Evaluating narrowed or leaking heart valves.
- › Looking for causes of murmurs, chest pain and shortness of breath.
- › Tracking and evaluating chronic heart conditions.
- › Acquiring images during a stress echocardiogram.
- › Assisting with image acquisition in the operating room for valve or device implantation.

## Program Details

The School of Cardiac Ultrasound is an accelerated full-time (Monday through Friday, 8 a.m. to 4:30 p.m.) certificate program offered through the Cleveland Clinic Sydell and Arnold Miller Family Heart, Vascular & Thoracic Institute. Students successfully completing the program are eligible to sit for the national registry exam through either Cardiovascular Credentialing International (RCS) or American Registry for Diagnostic Medical Sonographers (RDCS).

Classes start each year on the first Tuesday after Labor Day. All program classes are face-to-face. These, along with the clinical externship training, are held at Cleveland Clinic's main campus. The core curriculum includes Adult Echocardiography, Adult Echocardiography Lab, Ultrasound Physics and Clinical Externship.







### **Preadmission Requirements**

Admission to the Cleveland Clinic's School of Cardiac Ultrasound is selective. To be eligible for admission, you must have either a bachelor's degree or associate degree, or have completed an accredited allied health program. You must also complete post-secondary prerequisite courses with a grade of C or above in human anatomy and physiology with lab; college algebra or higher; communications (e.g., English, speech, composition course); and physics (preferred but not required).

### **Length of Program**

12 months

### **For additional information, please contact:**

**Amy Dillenbeck MS, ACS, RDCS, FASE**  
Program Director, School of Cardiac Ultrasound  
9500 Euclid Ave., Desk J1-5  
Cleveland, OH 44195

**216.444.1055** | [dillena@ccf.org](mailto:dillena@ccf.org)  
[clevelandclinic.org/cardiacultrasoundschool](http://clevelandclinic.org/cardiacultrasoundschool)

# Cardiovascular Perfusion

Perfusionists use heart-lung machines and other technologies to maintain the health of patients during heart surgery and other medical procedures. Employment as a perfusionist starts with national certification by the American Board of Cardiovascular Perfusion. In some states a license is also required.

## Program Details

Cleveland Clinic's School of Cardiovascular Perfusion is accredited by the Commission on Accreditation of Allied Health Education Programs (CAAHEP). Its graduates are eligible for national certification upon completion of all program requirements. This program is not affiliated with a college or university. It is offered by Cleveland Clinic's Sydell and Arnold Miller Family Heart, Vascular & Thoracic Institute. Classes start each year during the first week in January.

## Preadmission Requirements

Admission is open to applicants who have completed their baccalaureate degree and have taken the following prerequisite courses: Anatomy and Physiology, Biology, Chemistry, Biochemistry, Physics, Statistics and Pharmacology.

Interested applicants should discuss course selection to ensure all preadmission requirements have been met.

## Length of Program

17 months

**For additional information, please contact:**

**Matthew Wittenauer, CCP, MEd**

Cleveland Clinic's School of Cardiovascular Perfusion  
9500 Euclid Ave., J4-604  
Cleveland, OH 44195

**216.444.3895 or 216.444.9215**

[wittenm@ccf.org](mailto:wittenm@ccf.org)

[clevelandclinic.org/cardiovascular-perfusion](http://clevelandclinic.org/cardiovascular-perfusion)



# Clinical Pastoral Education

Clinical Pastoral Education is interfaith professional education for ministry. It brings theological students and ministers of all faiths into supervised encounters with individuals in crisis. It is the primary way to train hospital and hospice chaplains.

## Program Details

Clinical Pastoral Education (CPE) at Cleveland Clinic is an accredited program of the Association for Clinical Pastoral Education (ACPE). Cleveland Clinic offers all levels of CPE training, from the initial unit to supervisory training.

## Preadmission Requirements

This program is graduate-level training for ministers of all faith traditions who have completed (or are in process of completing) their master's degree in divinity, theology or equivalent field. Degrees must be from a school accredited by the Council of Higher Education Accreditation ([chea.org](http://chea.org)). An initial unit from an ACPE-accredited center is a prerequisite for admittance to the residency program.

The initial (or "basic") unit can be completed in three ways at Cleveland Clinic:

- Summer intensive unit – 10.5 weeks, full-time M-F plus on-call rotation. Usually begins the Monday after Memorial Day and ends mid-August.
- Fall extended unit – Every Wednesday from the week of Labor Day until the week before Christmas, plus weekly on-call rotations.
- Spring extended unit – Every Wednesday from the beginning of January until mid-May, plus weekly on-call rotations.



## Length of Program

16-19 weeks for extended units, 10-11 weeks for summer units, and one year for residency

## For additional information, please contact:

### Center for Spiritual Care

Cleveland Clinic  
9500 Euclid Ave., Q1-101  
Cleveland, OH 44195

**216.444.2518**

[clevelandclinic.org/pastoraleducation](http://clevelandclinic.org/pastoraleducation)



# Cytology

The cytologist (CT) is an allied health professional who reviews human cells under the microscope to diagnose malignancies, their precursors and a variety of inflammatory and reactive conditions from all parts of the body. Small changes in individual cells, both in the nucleus and the cytoplasm, are clues to disease states that may be present, and the cytologist must be able to distinguish these changes from normal cells. The responsibility of cytologists includes: meticulous preparation and review of cytologic slides, assisting pathologists during procedures with rapid on-site evaluation, and screening slides to determine a final diagnosis for quality patient care. Cytologists are employed in private laboratories and hospitals nationwide.

## Program Details

Cleveland Clinic's School of Cytology is a hands-on program devoted to the preparation of entry-level cytologists in both the preparation and screening of cytologic slides. The didactic and practical aspects of instruction are designed to fulfill the newly adopted entry level competencies for cytology programs. The program is accredited by the Commission on Accreditation of Allied Health Education Programs (CAAHEP) working with the Cytology Programs Review Committee (CPRC) of the American Society of Cytopathology (ASC). Students completing the program are eligible for the cytologist certification examination offered through the American Society for Clinical Pathology (ASCP) Board of Certification.

## Preadmission Requirements

Baccalaureate degree from an accredited college or university, cumulative GPA of 3.0, 28 semesters (42 quarter hours) of biology and chemistry and three semester hours (four quarter hours) of mathematics.

## Length of Program

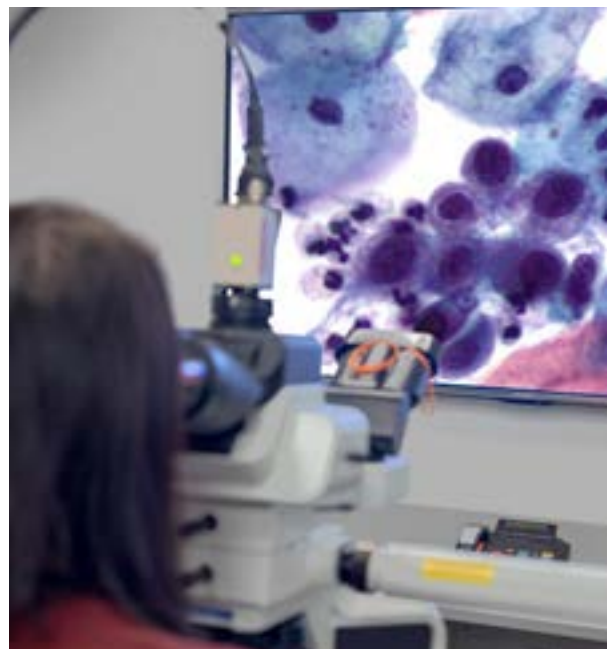
12 months

## For additional information, please contact:

**Bridgette Springer, MBA, CT(ASCP)<sup>CM</sup>**

Cleveland Clinic School of Cytology  
9500 Euclid Ave., L13  
Cleveland, OH 44195

**216.445.8524** | [springb@ccf.org](mailto:springb@ccf.org)  
[clevelandclinic.org/cytoschool](http://clevelandclinic.org/cytoschool)



# Diagnostic Imaging (Beachwood, OH)

- › Diagnostic Medical Sonography
- › Post Primary Computed Tomography (CT)
- › Post Primary Magnetic Resonance Imaging (MRI)
- › Primary Magnetic Resonance Imaging (MRI)
- › Radiologic Technology

The School of Diagnostic Imaging programs are licensed by the Ohio Department of Health Radiologic Licensure Program.

# Diagnostic Medical Sonography

A diagnostic medical sonographer is a highly skilled professional who uses specialized equipment to create images (sonograms) of structures inside the human body. Sonography is a non-invasive medical procedure in which echoes of high-frequency sound waves (ultrasound) construct an image (sonogram) of internal organs or body structures. In sonography, a transmitting device (the transducer) sends out high-frequency ultrasound waves. Harmless sound waves, which contain no radiation, bounce off the surfaces of the object they hit. The reflected sound forms an echo that is visualized on the screen. Physicians interpret the images to make a medical diagnosis.



## Program Details

This diagnostic medical sonography program is a certificate-based program approved by the Ohio State Board of Career Colleges and Schools.

## Preadmission Requirements

You must have completed the following college credit prerequisites with a grade of C or better:

- Medical Terminology
- Anatomy and Physiology I & II
- Math (algebra or higher level)
- Physics (health sciences or diagnostic sonography)
- Communications

## Length of Program

21 months

## For additional information, please contact:

**Angela Perry, BSA-S, RDMS, RUT, RMSKs**

Program Manager, Diagnostic Medical Sonography

25900 Science Park Dr., Bldg. 2

Beachwood, OH 44122

**216.448.5028** | [perrya@ccf.org](mailto:perrya@ccf.org)

[clevelandclinic.org/sonography-beachwood](http://clevelandclinic.org/sonography-beachwood)

# Post Primary Computed Tomography (CT)

Computed tomography (CT) technologists operate advanced imaging equipment to obtain computer-generated sectional images of the human body. The captured images are used by physicians to diagnose diseases. CT technologists must be able to provide quality patient care while working closely with the radiologist in a fast-paced, high volume area. Job opportunities are found in hospitals and outpatient diagnostic imaging clinics.

## Program Details

Students enrolled in the CT program will complete Introduction to CT, Cross Sectional Anatomy and Pathology, CT Physics, and CT Clinical courses. The CT courses are offered both days and evenings. The program begins each year in August.

The CT program participates in the Department of Veteran Affairs Post-9/11 GI BILL.

## Preadmission Requirements (all must be college credit courses)

Applicants must be a registered technologist

in radiography, nuclear medicine or radiation therapy, or a student in the final year of one of the aforementioned programs.

## Length of Program

The didactic courses can be completed in two or three semesters, depending on the student's availability for class. The clinical education is competency-based, and students complete the program's clinical requirements at their own pace.





# Post Primary Magnetic Resonance Imaging (MRI)

Magnetic resonance imaging (MRI) after resonance machines use a magnetic field and radiowaves to create detailed images of the human body, which are used by physicians to diagnose diseases. MRI technologists are highly trained in MRI safety and must have the ability to interact effectively with physicians and compassionately with patients.



## Program Details

Students enrolled in the MRI Post Primary program will complete Introduction to MRI; Cross-Sectional Anatomy and Pathology; MRI Physics; and MRI Clinical courses. The MRI courses are offered both days and evenings. The program begins each year in August.

## Preadmission Requirements (all must be college credit courses)

Applicants are to have completed Medical Terminology and Anatomy & Physiology I & II

## Length of Program

The didactic course can be completed in two or three semesters, depending on the student's availability for class and clinicals. The clinical education is competency-based, and students complete the program's clinical requirements at their own pace.

## For additional information, please contact:

**Kimberly Saghy, BAS, RT(R)(CT)(MR), MRSO**

Coordinator, Cleveland Clinic's School of

Diagnostic Imaging

25900 Science Park Dr., Bldg. 2

Beachwood, OH 44122

**216.554.3375** | [saghyk@ccf.org](mailto:saghyk@ccf.org)

[clevelandclinic.org/mri-beachwood](http://clevelandclinic.org/mri-beachwood)

# Primary Magnetic Resonance Imaging (MRI)

Magnetic resonance imaging (MRI) machines use a magnetic field and radio waves to create detailed images of the human body, which are used by physicians to diagnose diseases. MRI technologists are highly trained in MRI safety and must have the ability to interact effectively with physicians and compassionately with patients.

## Program Details

Students completing the program will be eligible to take the American Registry of Radiologic Technologists (ARRT) registry examination and be licensed in the state of Ohio. ARRT certification requires all candidates to have earned an associate degree or higher degree. The degree does not need to be in the radiologic sciences, and it needs to have been earned before entering the program. The program begins each year in August.

## Preadmission Requirements (all must be college credit courses)

Associate degree or higher and have completed Medical Terminology and Anatomy and Physiology I and II.

## Length of Program

16 months – four semesters

## For additional information, please contact:

**Kimberly Saghy, BAS, RT(R)(CT)(MR), MRSO**

MRI Manager, Cleveland Clinic School of Diagnostic Imaging MRI Program

25900 Science Park Dr., Bldg. 2

Beachwood, OH 44122

**216.554.3375** | [saghyk@ccf.org](mailto:saghyk@ccf.org)

[clevelandclinic.org/mri-beachwood](http://clevelandclinic.org/mri-beachwood)



# Radiologic Technology

Radiologic technologists are trained healthcare workers skilled in manipulating X-ray and other medical imaging equipment to take images of the body so that diseases, conditions or injuries can be visualized and diagnosed. Job opportunities are found in hospitals, doctors' offices and outpatient clinics.

## Program Details

This Cleveland Clinic's Radiologic Technology Program is a certificate-based program accredited by the Joint Review Committee on Education in Radiologic Technology (JRCERT). Students completing the program will be eligible to take the American Registry of Radiologic Technologists (ARRT) registry examination and be licensed in the state of Ohio. ARRT certification in radiography requires all candidates to have earned an associate or higher degree from an accrediting agency recognized by ARRT. The degree does not need to be in the radiologic sciences, and it can be earned before entering the educational program, during the program or after graduation. For students without a degree, the Radiologic Technology Program has degree completion agreements with the following colleges: Cuyahoga Community College, Kent State University – Ashtabula, Lakeland Community College and Lorain County Community College. The program begins each year in August.

The Radiologic Technology program participates in federal financial aid programs (Pell Grant and student loans), and the Department of Veteran Affairs Post-9/11 GI Bill.

## Preadmission Requirements (all must be college credit courses)

Anatomy & Physiology I & II or Anatomy & Physiology for Diagnostic Medical Imaging (Cuyahoga Community College only) and Medical Terminology

## Length of Program

21 months – five semesters

## For additional information, please contact:

### Barb Fertig, BS, RT(R)

Coordinator, Cleveland Clinic's School of Diagnostic Imaging  
25900 Science Park Dr., Bldg. 2  
Beachwood, OH 44122

**216.559.8342** | [bfertig@ccf.org](mailto:bfertig@ccf.org)  
[clevelandclinic.org/radiologicstechnology-beachwood](http://clevelandclinic.org/radiologicstechnology-beachwood)



# Diagnostic Imaging (Mercy Hospital, Canton, OH)

- › Diagnostic Medical Sonography
- › Radiologic Technology

The School of Diagnostic Imaging programs are licensed by the Ohio Department of Health Radiologic Licensure Program.



# Diagnostic Medical Sonography

The School of Diagnostic Medical Sonography at Mercy Hospital prepares students for an entry-level position in the field of ultrasound as a sonographer. The school prepares sonography students in the cognitive (knowledge), psychomotor (skills) and affective (behavior) learning domains. We ensure that our graduates are prepared to assume responsible positions within the healthcare team. Graduating students are eligible to apply for the exam given by the American Registry of Diagnostic Medical Sonography.

## Program Details

The School of Diagnostic Medical Sonography at Mercy Hospital is a program accredited by the Commission on Accreditation of Allied Health Education Programs. It provides a 12-month hospital-based diploma in the field of ultrasound. Graduates are eligible to become registered diagnostic medical sonographers with the American Registry of Diagnostic Medical Sonography in the specialties of obstetric/gynecological and abdominal ultrasound. Students are provided with didactic and clinical instruction on campus. More than 1,300 hours are dedicated to the mastery of clinical skills valuable in today's competitive market.



## Preadmission Requirements

You must have an associate degree in a healthcare field with direct patient care OR a four-year bachelor's degree in any field. Either must include the following prerequisites:

- Basic Life Support (BLS) certification from the American Heart Association.
- GPA of at least 2.5.
- Satisfactory completion of the following college level course prerequisites:
  - Human Anatomy and Physiology
  - General Physics
  - Communication skills
  - Algebra 101 or higher college math
  - Human Anatomy Physiology II (or Principles of Human Structure & Function or Human Biology)
  - Medical Terminology
  - Human Disease (general pathophysiology)
- All foreign transcripts must be evaluated by World Education Services on a course-by-course basis.

## Length of Program

12 months

## For additional information, please contact:

**Susan Bielanski, BS, RDMS**

Program Director, School of Diagnostic  
Medical Sonography  
1320 Mercy Dr. NW  
Canton, OH 44708

**330.489.1000, ext. 6609** | [bielanS2@ccf.org](mailto:bielanS2@ccf.org)  
[clevelandclinic.org/sonography-mercy](http://clevelandclinic.org/sonography-mercy)

# Radiologic Technology

Radiologic technologists are trained to manipulate radiologic and other medical imaging equipment for the purpose of imaging the human body so that diseases, conditions or injuries can be visualized and diagnosed. Job opportunities are found in hospitals, doctors' offices and outpatient clinics.

## Program Details

The Cleveland Clinic Mercy Hospital Radiologic Technology Program is diploma-based and accredited by the Joint Review Committee on Education in Radiologic Technology (JRCERT). Students who complete the program are eligible to take the American Registry of Radiologic Technologists (ARRT) Registry Examination and be licensed as a radiographer in the state of Ohio. ARRT certification in radiography requires all candidates to have earned an associate degree or higher from an accrediting agency recognized by the ARRT and have successfully completed an accredited radiologic technology program. The degree does not need to be in the radiologic sciences, and it can be earned before entering the radiologic technology educational program, during the program or after graduation.

The School of Radiologic Technology at Mercy Hospital is affiliated with Kent State University and provides a pathway to an ATS degree (associate degree in technical study) upon graduation from the Cleveland Clinic Mercy Hospital School of Radiologic Technology. The current agreement is effective through May 31, 2025.

If you have NO college credits, you should complete your prerequisites at a Kent State University regional campus. The Kent State University Stark Campus is recommended. To receive a degree from Kent State University, you will be required to complete 15 residency credits. This means that 15 of your college credits need to be from courses you have completed at a Kent State University regional campus.



## Preadmission Requirements (all must be college credit courses)

Anatomy & Physiology I & II, college Algebra, and Medical Terminology

## Length of Program

21 months

## For additional information, please contact:

### Devin Johnson BSRT (R)(CT)(MR)

Acting Program Director, Mercy School of Radiologic Technology  
1320 Mercy Dr. NW  
Canton, OH 44708

**330.489.1000, ext. 1348** | [johnsod60@ccf.org](mailto:johnsod60@ccf.org)  
[clevelandclinic.org/radiologicstechnology-mercy](http://clevelandclinic.org/radiologicstechnology-mercy)

# Dietetic Internship

A registered dietitian nutritionist (RDN) is a food and nutrition expert who helps individuals in a variety of settings to make smart diet and lifestyle choices and to improve their nutrition during and after illness or injury. RDNs may work in a clinical setting to plan specialized diet interventions for patients who are diagnosed with particular conditions. They can also help patients who are unable to eat by mouth and require feeding through a tube or IV.

Dietitians may also work with industry to set nutrition guidelines and develop innovative food products or practice in a community setting to counsel and provide education to diverse populations. In the United States, the Academy of Nutrition and Dietetics' Commission on Dietetic Registration (CDR) grants RDN credentials to individuals who complete requisite education and training, and pass a national credentialing exam.

## **Program Details**

Cleveland Clinic's Dietetic Internship is a 10-month, 40-week didactic and hands-on training program that maintains a focus on clinical nutrition. The program is accredited by the Accreditation Council for Education in Nutrition and Dietetics (ACEND). Up to 10 interns are selected each year for the program through a centralized national application process. Interns spend most of their time during fall and winter in a clinical setting that allows them to practice in several specialty areas, including: inpatient care; outpatient counseling and education; critical care; nutrition support; and pediatrics. To complement the clinical experience, all interns complete training in nutrition-focused physical exam and malnutrition diagnosis and assessment using the on-campus simulation center. Interns learn food service management skills for four weeks. During spring, interns have the flexibility to select nine weeks of elective rotations that best meet their professional interests, including staff relief, and working with the Cleveland Clinic's Center for Gut Rehabilitation and Transplant, Wellness Institute or Functional Medicine teams as well as community/public health and sales and marketing rotations. Interns also contribute to work on a research or quality improvement project to further demonstrate the value of the RDN to the greater allied health and medical profession.



### Preadmission Requirements

Candidates must complete or be enrolled in a master's degree at a U.S. (or international reciprocal) accredited university or college, with coursework accredited or approved by the Accreditation Council on Education in Nutrition.

Cleveland Clinic's Dietetic Internship program participates in DICAS (Dietetic Internship Centralized Application System). Interviews are granted to top candidates. Selection occurs each winter/early spring.

### Length of Program

The internship is 10 months (40 weeks), starting in August and ending in June. The program will result in a certificate of completion, as well as a verification statement that allows graduates to sit for the National Examination for Registered Dietitians.

### Financial Aid

Interns who are not enrolled in an academic program through our affiliate institutions may defer their student loans throughout the duration of the internship program. Our program can also accept tuition payments through G.I. Bill funds.

### For additional information, please contact:

**Naomi Barbor, MS, RD, LD**

Program Director, Cleveland Clinic,  
Center for Human Nutrition – Digestive Disease  
and Surgery Institute  
9500 Euclid Ave., M17  
Cleveland, OH 44195

**216.444.6487** | [barborn@ccf.org](mailto:barborn@ccf.org)  
[clevelandclinic.org/dieteticinternship](https://clevelandclinic.org/dieteticinternship)



# EMT and Paramedic Education



As an emergency medical technician (EMT), you will provide pre-hospital emergency care to the acutely ill or injured patient. You will be trained to perform skills such as airway management, cardiac arrest management, childbirth delivery, joint and long bone immobilization, spinal immobilization and patient assessment.

As a paramedic you will provide the highest level of pre-hospital emergency care to the acutely ill or injured patient. Paramedics have an advanced level of knowledge and skills to help patients in need in the pre-hospital setting. In addition to your skills as an EMT, you will be trained in intubation, cricothyroidotomy, needle decompression, intravenous and intraosseous access, medication delivery and advanced cardiac care.



### Program Details

The Paramedic Program was initiated in 1976 and has trained over 1,300 paramedics. The program is accredited by the Ohio Department of Public Safety, the Commission on Accreditation of Allied Health Education Programs (CAAHEP), and the Committee on Accreditation for the EMS Professions (CoAEMSP). In 1991, our program became the first hospital-based program in Ohio to obtain CAAHEP national certification.

### EMT

#### Preadmission Requirements

High school graduate (other requirements listed on program webpage)

#### Length of Program

16 weeks (January – April or August – December)



### Paramedic

#### Preadmission Requirements

Ohio EMT (other requirements listed on program webpage)

#### Length of Program

10 months (January – October or August – June)

#### For additional information, please contact:

**Danielle Morris, MAEd, NRP**

Cleveland Clinic Akron General

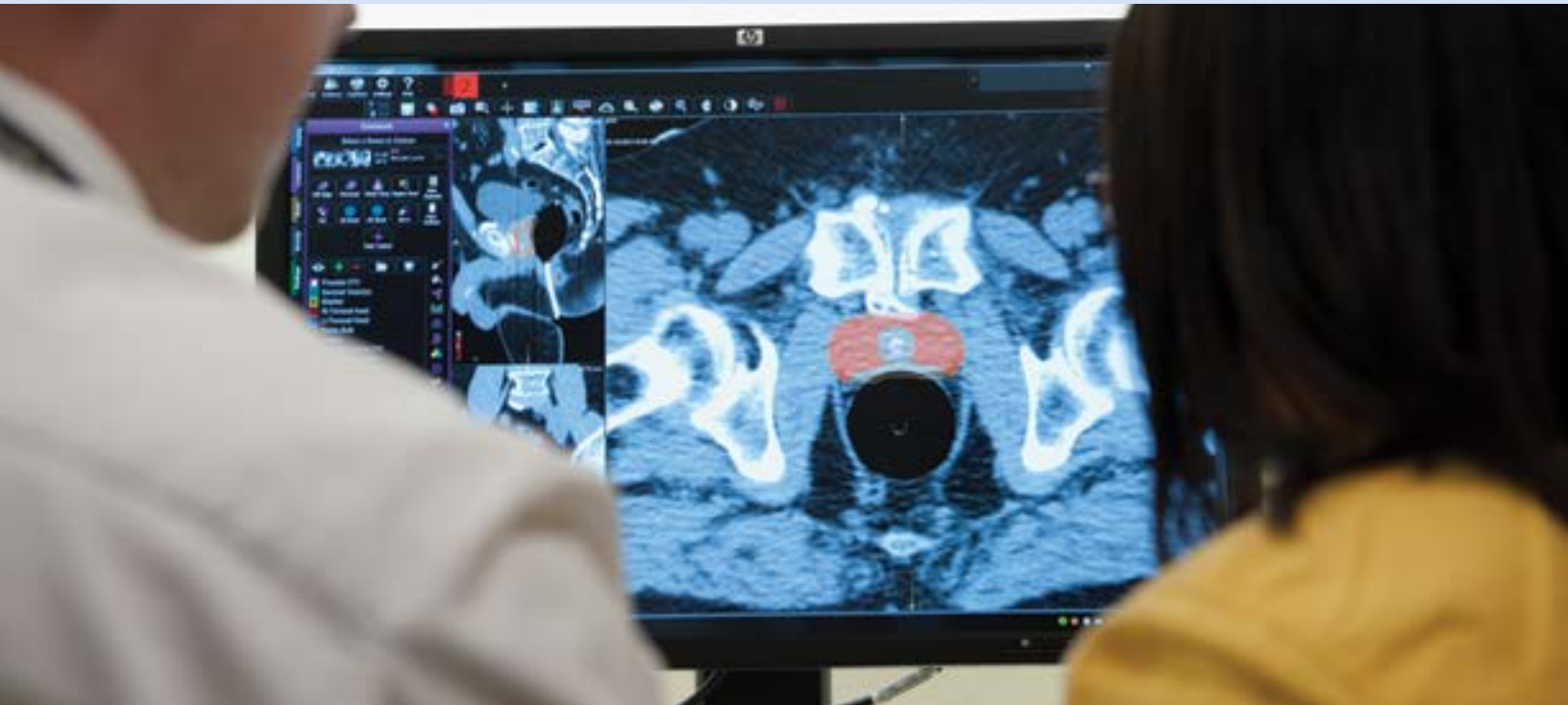
1 Akron General Ave.

Akron, OH 44307

**330.344.6655** | [emseducation@ccf.org](mailto:emseducation@ccf.org)

[akrongeneral.org/ems](http://akrongeneral.org/ems)

# Medical Dosimetry



The medical dosimetrist, in collaboration with the radiation oncologist and medical physicist, performs calculations and designs treatment plans that maximize the prescribed radiation dose to cancerous tumors while minimizing dose to nearby healthy tissues. Medical dosimetrists must be knowledgeable of radiation oncology simulators, treatment machines and brachytherapy. The medical dosimetrist coordinates tumor localization CT, MRI and/or PET when indicated. The dosimetrist performs in-vivo dosimetry, supervises radiation therapists and assists with brachytherapy procedures.

## **Preadmission Requirements**

To be eligible for admission, the applicant must have a baccalaureate degree and ARRT registration in radiation therapy. They must also complete college-level prerequisite courses with a grade of C or above in Human Anatomy and Physiology, Cross-Sectional Anatomy, Physics and Introductory or Pre-Calculus.

## **Length of Program**

12 months

## **For additional information, please contact:**

**Matt Kolar, MS**

Cleveland Clinic Radiation Oncology  
9500 Euclid Ave., CA-50  
Cleveland, OH 44195

**216.445.8403** | [kolarm@ccf.org](mailto:kolarm@ccf.org)  
[clevelandclinic.org/medicaldosimetry](http://clevelandclinic.org/medicaldosimetry)



# Medical Laboratory Science

A medical laboratory scientist conducts diagnostic laboratory tests that are important in detecting, analyzing and treating a wide variety of disease and medical conditions. Microscopes, reagents, precise analytical systems and instrumentation are used by medical laboratory scientists to perform tests that give physicians and caregivers detailed information about various conditions, including the diagnosis and prognosis of the patient.

## Program Details

The Cleveland Clinic's School of Medical Laboratory Science is accredited by the National Accrediting Agency for Clinical Laboratory Sciences (NAACLS). This program offers a course of study designed to prepare students for the everchanging landscape of laboratory medicine. Coursework includes didactic, laboratory and clinical experiences in clinical hematology; clinical coagulation; clinical immunohematology; clinical immunology; clinical bacteriology, mycology and parasitology; and clinical chemistry. Students completing the program will be eligible to sit for the American Society for Clinical Pathology (ASCP) Board of Certification examination.

## Preadmission Requirements

Applicants must be enrolled as medical laboratory science students at an affiliated school or have a baccalaureate degree (minimum credit hours and robust GPAs are required for math and science-related areas). Please see the website for details.

## Length of Program

50 weeks

## For additional information, please contact:

**Barbara Zingale, MSIT, MLS(ASCP)<sup>CM</sup>**

Program Director, Cleveland Clinic Robert J. Tomsich  
Pathology and Laboratory Medicine Institute  
9500 Euclid Ave., L13  
Cleveland, OH 44195

[mls@ccf.org](mailto:mls@ccf.org)

[clevelandclinic.org/mlsschool](http://clevelandclinic.org/mlsschool)





# Medical Scribe Training

- › Advanced Transcription, Observation, Medical Instruction (ATOMIC)
- › Medical Observation and Scribe Training (MOST)
- › International Medical Graduate Mentorship Program and Advanced Clinical Transcription (IMPACT)

# Advanced Transcription, Observation, Medical Instruction (ATOMIC)



## Program Details

The ATOMIC program is a dynamic collaboration with the Case Western Reserve University (CWRU) School of Medicine's master's degree and postbaccalaureate programs, including but not limited to the Master of Medical Physiology, Master of Applied Anatomy, master's in biochemistry, master's in bioethics and medical humanities, Master of Pathology and Post-Baccalaureate Readiness Instruction for Biomedical Education (PRIME). The clinical experience is made up of a minimum of four four-hour scribing shifts per week, totaling 16 hours. Weekday shifts typically follow a standard 8 a.m. to 5 p.m. schedule. This immersive program is an excellent way to gain a competitive edge for a career in healthcare.

## Admission Requirements

Second-year CWRU School of Medicine master's or professional school student. Completion of first-year core curriculum with a minimum GPA of 3.0. Letter of support from academic advisor.

[clevelandclinic.org/scribe-atomic](https://clevelandclinic.org/scribe-atomic)

# Medical Observation and Scribe Training (MOST)

A scribe is a non-licensed individual who is trained in medical terminology, pathophysiology and other key components of the outpatient exam documentation. They document the real-time spoken finding of the licensed independent provider (e.g., physician or APP) related to the history of present illness, physical exam, impression and plan; pend orders and labs; review records; and provide other clerical assistance to providers in the ambulatory setting. They assist with follow-up and act as a member of the care team so that clinical providers are able to act efficiently and at the top of their license.

## Program Details

The MOST (Medical Observation and Scribe Training) fellowship is a postbaccalaureate training program that gives students exposure to hospital-based outpatient clinical workflows, documentation and other educational opportunities. Students are trained in basic medical terminology, clinical workflow documentation, pathophysiology and other core scribing education competencies. They complete at least 24 hours per week of scribing and medical observation with their assigned clinical preceptor. In their additional time, students work in research (areas of their interest and opportunities are matched) and attend educational lectures (grand rounds, etc.). We strive to have one-to-one matches with preceptors and students but in some cases may need more than one preceptor to accommodate the student's hourly clinical requirements.

This program is being developed in collaboration with Stanford University. The two programs will co-develop an educational curriculum and continue to grow expertise and content areas through this partnership.

## Preadmission Requirements

Bachelor's degree

## Length of Program

12 months

[clevelandclinic.org/scribe-most](http://clevelandclinic.org/scribe-most)



# International Medical Graduate Mentorship Program and Advanced Clinical Transcription (IMPACT)

The IMPACT fellowship is designed to provide a robust clinical and mentorship program to support international physicians in their application for U.S. medical residency.

The program involves strong direct patient care through medical scribing, hands-on research experiences, one-on-one mentorship with IMG faculty, and recommendation letters and mentorship through your Cleveland Clinic physician preceptor. Expectations include scribing a minimum of six four-hour clinic shifts or 24 hours per week. The shifts are on the weekdays and typically start at 7 a.m. and end at 5 p.m. Please note that actual shift times may vary.

## Preadmission Requirements

International medical graduate from an accredited medical university/college. Successfully passed USMLE step 1 and step 2. Letter from registrar noting completion of all graduation requirements. Advisor letter of support noting no issues with professionalism or academic record.

## For additional information, please contact:

**Sandra Hong, MD, FAAAAI, FAAAAI**

Director, Medical Observation and Scribe Training (MOST) Fellowship  
Cleveland Clinic  
16761 Southpark Center, ST40  
Strongsville, OH 44136

**440.878.2585** | [mostfellowship@ccf.org](mailto:mostfellowship@ccf.org)  
[clevelandclinic.org/scribe-impact](https://clevelandclinic.org/scribe-impact)





# Nurse Anesthesia

Certified registered nurse anesthetists are advanced practice nurses who provide anesthesia services to patients undergoing a variety of surgical and diagnostic procedures. They practice in every setting, including physician and dentist offices, surgery centers, labor and delivery centers, hospitals and every branch of the military. They provide anesthesia and pain management care for patients of all ages and for all surgical specialties.

## Program Details

Cleveland Clinic's School of Nurse Anesthesia is accredited by the Council on Accreditation of Nurse Anesthesia Educational Programs. It's a jointly administered program with Case Western Reserve University that leads to a Doctor of Nursing Practice degree upon completion. Graduates are eligible to sit for the National Certification Examination upon completion of all program requirements. It has an academic affiliation with Case Western Reserve University. Classes begin annually in June.

## Preadmission Requirements

Admission is open to baccalaureate-prepared registered nurses who have at least one year (two preferred) of recent critical care experience in the United States or its territories. Applicants are admitted on a competitive basis, as there are always more qualified applicants than positions available. Applications are handled through the Frances Payne Bolton School of Nursing at Case Western Reserve University.

## Length of Program

36 months, full-time

## For additional information, please contact:

**Angela Milosh, DNP, CRNA**

Program Director, Cleveland Clinic Foundation/  
Frances Payne Bolton School of Nursing/Case  
Western Reserve University School of Anesthesia  
9500 Euclid Ave., E3-38  
Cleveland, OH 44195

**216.444.6951** or **216.444.6547**

[milosha@ccf.org](mailto:milosha@ccf.org)

[clevelandclinic.org/crnaschool](http://clevelandclinic.org/crnaschool)



# Pharmacy Technology

Pharmacy technicians assist licensed pharmacists with tasks such as formulating, labeling and dispensing medications, along with maintaining patient profiles and performing other routine tasks.

## Program Details

Cleveland Clinic's School of Pharmacy Technology is one of the only hospital-based technician schools in the country that is accredited by the American Society of Health-System Pharmacists (ASHP). Combining didactic learning with real-world hands-on training allows our students to gain instruction from some of the top industry professionals. Students obtain the skills necessary to pass the nationally recognized Pharmacy Technician Certification Exam and work in a multitude of pharmacies.



## Preadmission Requirements

The following criteria are used to determine eligibility into the program:

1. Completion of program application.
2. Copy of high school diploma or GED equivalent.
3. Students must be at least 18 upon application.
4. Completion of a phone interview and on-site interview.
5. All accepted students must register with the Ohio Board of Pharmacy as a technician trainee as part of admission requirements.

## Length of Program

18 weeks: Included in this timeframe are 10 weeks of didactic learning in conjunction with 100 hours of simulated training experiences, followed by 200 hours of real-world hands-on training.

## For additional information, please contact:

**Oana Kytzu, MEd, BS, CPhT**

Program Manager, Cleveland Clinic's School of Pharmacy Technology

9500 Euclid Ave.

Cleveland, OH 44195

[kytzuo@ccf.org](mailto:kytzuo@ccf.org)

[clevelandclinic.org/pharmacytech](http://clevelandclinic.org/pharmacytech)

# Phlebotomy

The School of Phlebotomy prepares students for the ever-changing field of phlebotomy. Phlebotomists serve a vital role in the care of patients and handle an increasing demand for diagnostic testing samples. As a student of our program, you will develop venipuncture skills along with the soft skills required to provide samples that are essential to diagnose diseases and monitor patient progress.

We welcome students who are enthusiastic about providing focused patient care and have a strong work ethic conducive to provide quality samples for patient testing.

## Program Details

The School of Phlebotomy is accredited by the National Accrediting Agency for Clinical Laboratory Sciences (NAACLS). Lectures present the principles of phlebotomy equipment and venipuncture techniques. Additional lectures cover a review of phlebotomy history and healthcare settings, medical terminology, anatomy and physiology, with emphasis on the circulatory system. Laboratory work emphasizes phlebotomy techniques using multi-sample needles, syringes and butterfly collections along with proper methods of specimen handling, specimen processing and point-of-care testing.

## Preadmission Requirements

- High school diploma or GED
- Minimum cumulative GPA of 2.5
- Candidates must submit all transcripts from school and/or college (if applicable).
- Applicants for whom English is not their primary language must provide a TOEFL iBT test score of 70 or greater.

## Length of Program

12 weeks

## For additional information, please contact:

**Gerald Hicks, MBA, MLT (AMT), PBT (ASCP)**

Program Director, School of Phlebotomy  
Cleveland Clinic Lutheran Hospital  
2706 Franklin Blvd.  
Cleveland, OH 44195

**216.442.2920** | [ccsp@ccf.org](mailto:ccsp@ccf.org)  
[clevelandclinic.org/schoolphlebotomy](http://clevelandclinic.org/schoolphlebotomy)



# WOC Nursing Education Program



Wound, ostomy and continence (WOC) nurses are in demand to provide care for individuals with select disorders of the genitourinary and gastrointestinal systems. WOC nurse expertise is valuable to provide care to individuals with ostomy, wound and continence care needs in a variety of settings including acute care, long-term care, rehabilitation, healthcare education programs, industry and research. Their knowledge extends to all patient populations (pediatric, adolescent, adult, geriatric) and healthcare areas (colorectal surgery, urology, bariatrics, etc.).

## **Program Details**

Cleveland Clinic's R.B. Turnbull Jr., MD School of Wound, Ostomy & Continence (WOC) Nursing Education, established in 1961, was the first of its kind in the world. The program prepares nurses to care for individuals with select disorders of the gastrointestinal and genitourinary systems. Wound, ostomy and continence (WOC) nurses have a vital role in pre- and post-operative management of patients with ostomies and are instrumental in the prevention and treatment of acute and chronic wounds, fistula, pressure injuries (ulcers) and other skin disorders and are specialists in the care of individuals with urinary and fecal incontinence. Nurses will acquire the knowledge and skills necessary to provide patients with effective psychological support, discharge planning, rehabilitative counseling and follow-up care.



### Preadmission Requirements

Applicant must be a legal U.S. resident who currently lives in the United States, be actively licensed as a registered nurse with a baccalaureate degree or have a baccalaureate degree in a field other than nursing with demonstrated baccalaureate-level nursing competencies in the areas of health assessment; leadership and management, research and statistics; and community health nursing. They must also have a minimum of one full year of RN clinical experience within the last five years before enrolling in this program.



### Length of Program

Didactic courses are provided online while the practicum or clinical component is completed at a healthcare facility. Each online didactic course is four weeks in length, followed by a one-week break. The total amount of time required to complete the program is based upon the number of specialty track courses completed. A minimum of eight weeks is required for single scope, 12 weeks for dual scope and 16 weeks for tri-scope.

Additionally, a practicum course (clinical experience) is required of all students who are pursuing a program certificate of completion. A minimum of 40 clinical hours is required for each specialty course successfully completed. Students are provided 12 weeks to complete the practicum course requirements. A maximum of two four-week extensions may be granted, with a fee, to assist students in achieving program completion.

### For additional information, please contact:

**Cleveland Clinic R.B. Turnbull Jr., MD**  
**School of WOC Nursing Education**

**216.317.7163** | [wocschool@ccf.org](mailto:wocschool@ccf.org)  
[clevelandclinic.org/wocschool](http://clevelandclinic.org/wocschool)



**Every life deserves world class care.**

9500 Euclid Ave., Cleveland, OH 44195

Cleveland Clinic is a globally integrated multispecialty healthcare system combining hospital and outpatient care with research and education for better patient outcomes and experience. Cleveland Clinic has 81,000 caregivers worldwide, including 5,700 physicians and scientists. The health system consists of 23 hospitals and 276 outpatient locations, including a main campus in Cleveland; 15 regional hospitals in Northeast Ohio; five hospitals in Southeast Florida; a center for brain health in Las Vegas, Nevada; executive health and sports health services at two locations in Toronto, Canada; a hospital and outpatient center in London, United Kingdom; and a hospital and cancer center in Abu Dhabi, United Arab Emirates.  
[clevelandclinic.org](http://clevelandclinic.org)

©2024 The Cleveland Clinic Foundation